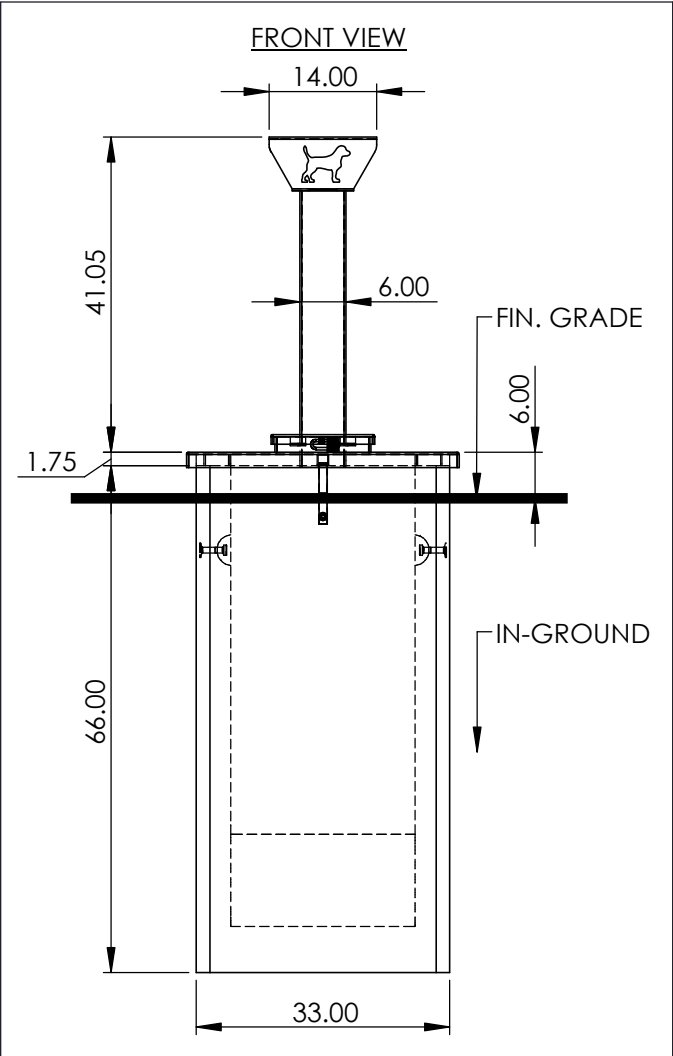
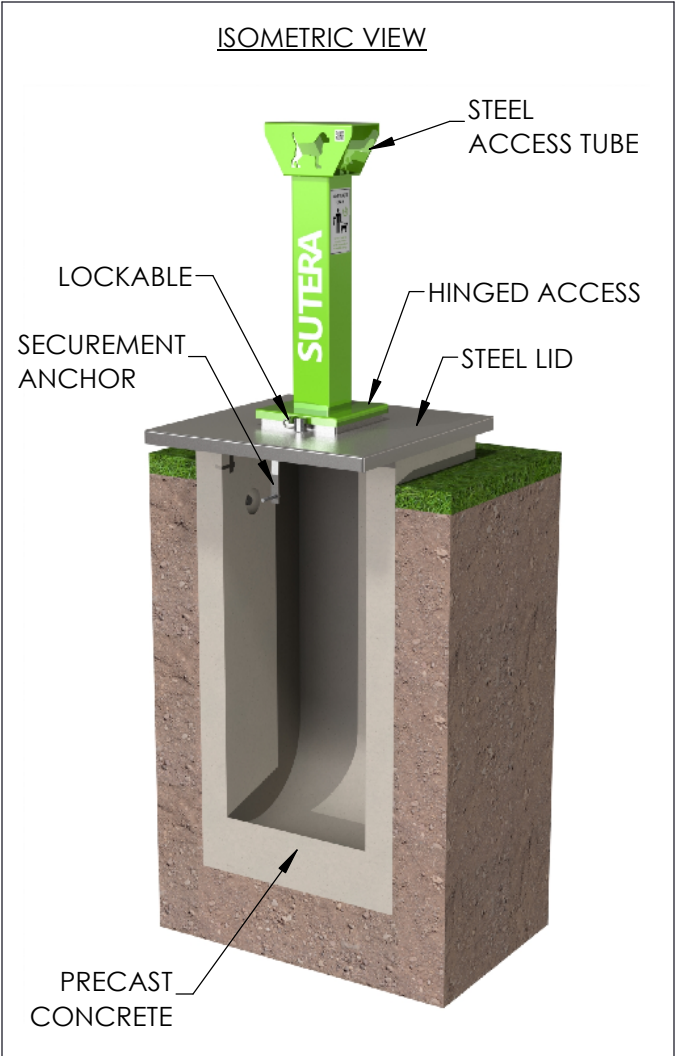


PRODUCT SPECIFICATIONS SHEET



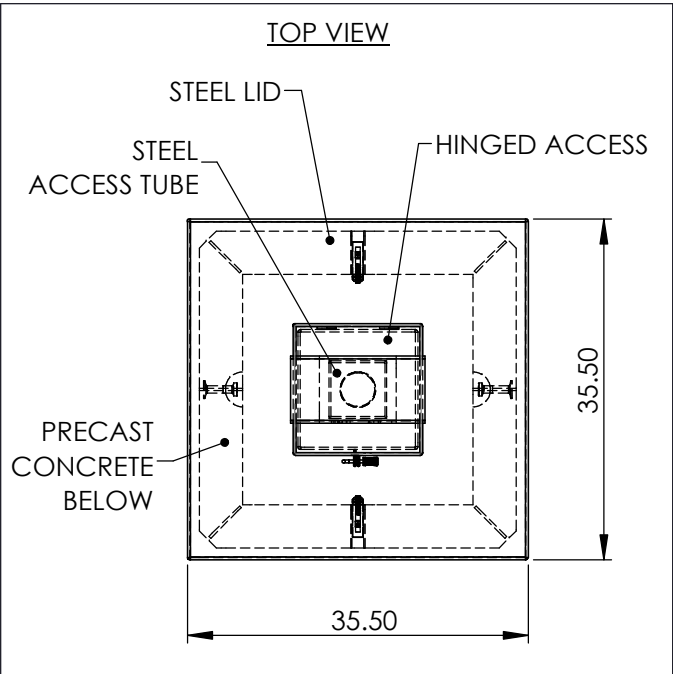
PRODUCT DESCRIPTION:

DS-1α: DOG WASTE CONTAINMENT SYSTEM (VACUUM SERVICE)
UTILIZING STEEL & CONCRETE CONSTRUCTION, THIS UNIT WILL NOT FLOAT OUT OF THE GROUND AND CAN CONTAIN 0.71 cu.yds. (542 liters) OF WASTE.



SPECIFICATIONS:

- MANUFACTURER:** SUTERA USA, LLC
MODEL No.: DS-1α
SIGNAGE: "DOG WASTE ONLY..."
STEEL ACCESS TUBE:
CONSTRUCTION: MILD STEEL
FINISH: PAINT (GREEN)
WEIGHT: 90 lbs (41 kg)
HINGED ACCESS TO CONTAINMENT WELL
STEEL LID:
CONSTRUCTION: MILD STEEL
FINISH: PAINT (GREY - NON SLIP COATING)
WEIGHT: 100 lbs (45 kg)
PRECAST CONCRETE:
CONSTRUCTION: CONCRETE
FINISH: EXPOSED CONCRETE
WEIGHT: 3328 lbs (1510 kg)
LOCK TAB:
FITS STANDARD PAD LOCK (SUPPLIED BY OTHERS)
LINER BAG:
NOT REQ'D - VACUUM SERVICE
SECUREMENT ANCHORS:
FASTENS STEEL LID TO PRECAST CONCRETE
BUYOANCY:
WILL NOT FLOAT OUT OF THE GROUND, SEE SEPARATE
BUYOANCY CALCULATION SHEET, AVAILABLE UPON
REQUEST.
CONTAINMENT CAPACITY:
0.71 cu.yds (542 liters)
MAINTENANCE:
KEEP CLEAN BY SPRAYING DOWN WITH CLEAN WATER.
GREASE ACCESS TUBE HINGES ANNUALLY
SERVICE REQUIREMENTS:
CONTENTS TO BE REMOVED BY VACUUM TRUCK



SUTERA USA, LLC
Tel. 1-866-524-9082
fax. 864-627-0804
UNITED STATES:
55 Commerce Center
Greenville, SC. 29615
CANADA:
700 Rupert Street
Waterloo, ON. N2V 2B5

